



TPX90
GRADE

PRODUCT DATA SHEET

TRI-PURPOSE DIAMOND BLADE

TPX90 TRI-PURPOSE

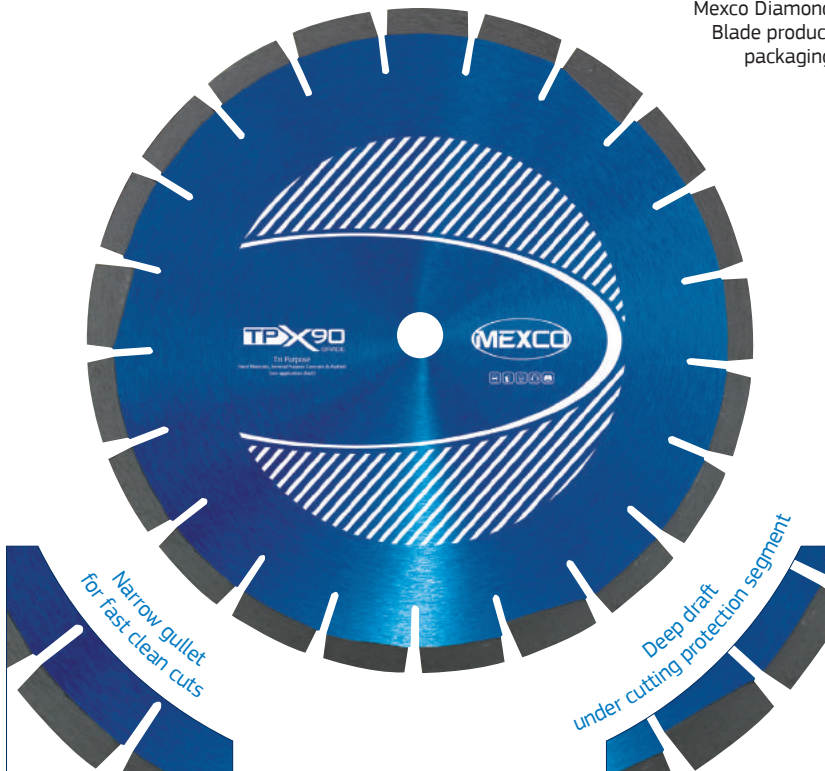
The TPX - Tri-purpose diamond blade ensures that you have the correct diamond blade for the most common applications already mounted on your saw. The narrow gullets and 12mm diamond segments ensure a clean finish and fast stock removal when cutting hard materials.

KEY FEATURES

- 12mm Laser Welded Segments
- Narrow Gullets
- Deep draft under cutting protection segments



Mexco Diamond Blade product packaging



PRODUCT OVERVIEW:

Grade: X90
Segment Height: 12mm
Segment Attachment: Laser Welded
Dry/Wet: Wet or Dry Use
Recommended for: Disc Cutter
Segment Type: Segmented
Gullet Type: Narrow
Undercutting Protection: Yes

X90
GRADE

LOW WEAR RATE

The X90 range of products allow a broad range of cutting applications and will provide fast cutting characteristics combined with low wear rates and an excellent lifetime.



PRODUCT DATA SHEET

DIAMETERS AVAILABLE:

Code	Diameter		Segment Width (mm)	Bore Size / s (mm)
	(mm)	(in)		
TPX9030020	300	12	3.2	20

SUITABLE FOR USE ON:



APPLICATION:

- Granite
- Class A Engineering Brick
- Clay Paviments
- Clay Pipes Vitrified
- Clay Roof Tiles
- Quarry Tiles
- Non Abrasive Indian Sandstone
- Hard Facing Brick
- Medium Facing Brick
- Hard Slate
- River Gravel Aggregate Concrete
- Flint Aggregate Concrete
- Reinforced Concrete
- Concrete Kerbs
- Concrete Slabs
- Reinforced Lintels
- Hard Limestone
- Limestone Aggregate Concrete
- Concrete Paviments
- Soft Facing Brick
- Concrete Blocks Over 15kn
- Hard Sandstone
- Soft Slate
- Medium Sandstone
- Concrete Roof Tiles
- Concrete With Med Sharp Sandstone
- Coarse Sandstone
- Breeze Block
- Shallow Concrete Screed
- Asphalt Over Concrete
- Concrete Block Under 15kn
- Green Concrete
- Lignacite Blocks
- Asphalt



Hard Slate



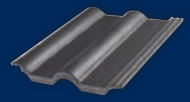
Reinforced Concrete



Concrete Slabs



Concrete Block



Concrete Roof Tile



Asphalt

- **RECOMMENDED** to cut these materials
- **Will cut these materials** with the possibility of reduced lifetime / glazing

CONFORMS TO EN13236

www.mexco.co.uk | Tel: 0845 602 4274 | Email: sales@mexco.co.uk

Please note: Before using any cutting, grinding or drilling tool you should always consult your machine manufacturers hand book to establish the consumable tools suitability for the machine being used. Always wear the correct safety clothing and accessories before you commence use of the equipment.