

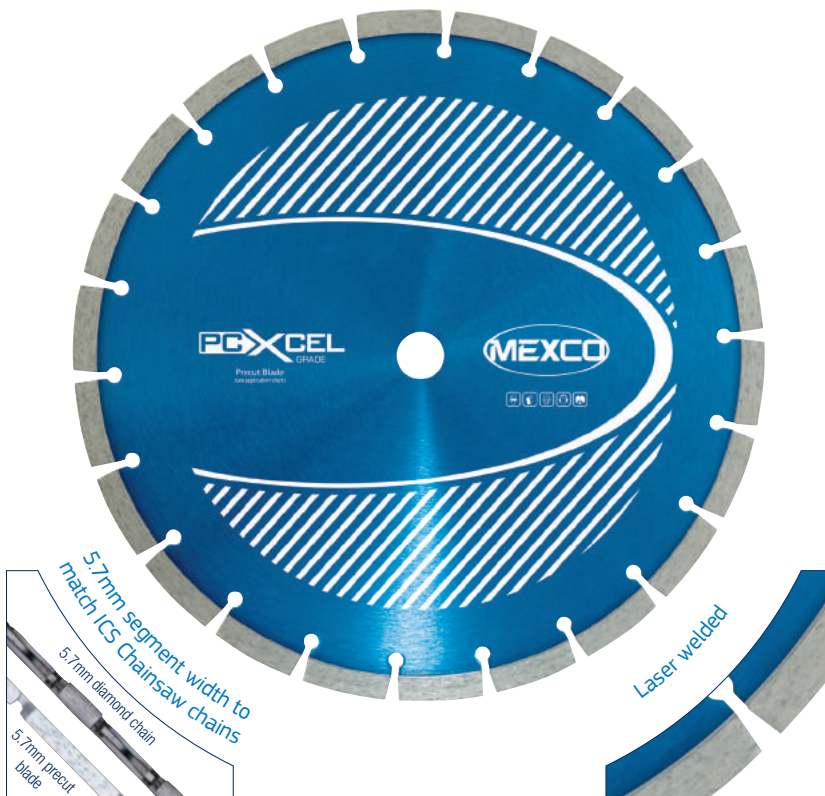


PCXCEL CONCRETE CHAINSAW PRE-CUT BLADE

The Mexco PCXCEL pre-cut blade is the ideal solution for reducing the expense of masonry chainsaw consumables. With a 5.7mm wide segment the PCXCEL effortlessly pre-cuts a 125mm (5") deep slot in all masonry products providing you with a straighter more economical cut to follow on with your chainsaw.

KEY FEATURES

- 5.7mm Segment Width
- 10mm Segment Heights
- Laser Welded Segments
- High Diamond Concentration



PRODUCT OVERVIEW:

**Grade:** XCEL  
**Segment Height:** 10mm  
**Segment Attachment:** Laser Welded  
**Dry/Wet:** Wet or Dry Use  
**Recommended for:** Disc Cutter

**Segment Type:** Segmented  
**Gullet:** Keyhole

XCEL GRADE | OPTIMUM COST PER CUT

The XCEL range of products are simply our best in class, due to an uncompromised use of raw materials in their manufacture they offer the user a cutting or drilling experience that is faster and cleaner with an optimum cost per cut.



PRODUCT DATA SHEET

DIAMETERS AVAILABLE:

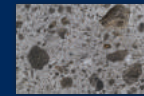
Code	Diameter		Segment Width (mm)	Bore Size / s (mm)
	(mm)	(in)		
PCXCEL35025	350	14	5.7	25.4

SUITABLE FOR USE ON:



APPLICATION:

MEDIUM TO ABRASIVE CONCRETE AND BUILDING MATERIALS



Flint Aggregate Concrete



Reinforced Concrete



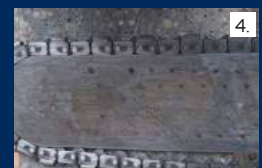
1. Use the CHAINSAW Pre-cut Blade in conjunction with your current 14" (350mm) cut-off saw.



2. Precut the first 5" (125mm) faster and more economically.



3. The CHAINSAW PRE-CUT BLADE effortlessly cuts through reinforced concrete and other masonry products.



4. Finish off corners and remaining depth with diamond chainsaw.

For use in conjunction with ICS Masonry Chainsaws



Save Time



Save Money

Save time and money by cutting the first 5" (125mm) with the PCXCEL Chainsaw Pre-cut Blade

