

**GPX90 GENERAL PURPOSE**

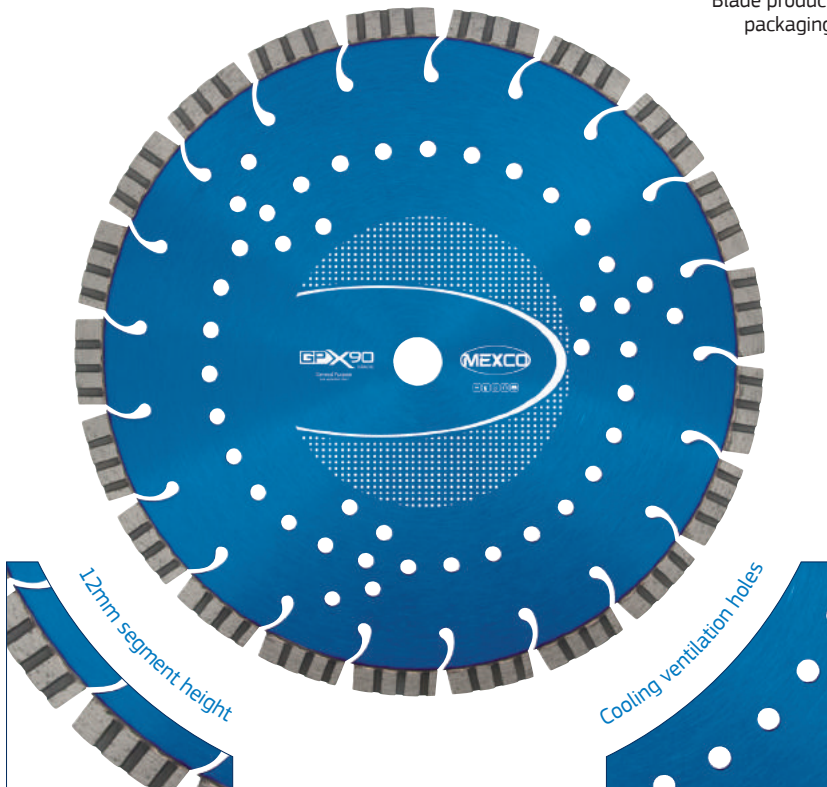
This product offers excellent cutting speeds and lifetime providing consistent results in non abrasive building products.

**KEY FEATURES**

- 12mm Segment Height
- Cooling Ventilation Holes
- Laser Welded Segments



Mexco Diamond Blade product packaging



**PRODUCT OVERVIEW:**

**Grade:** X90  
**Segment Height:** 12mm  
**Segment Attachment:** Laser Welded  
**Dry/Wet:** Wet or Dry Use  
**Recommended for:** Angle Grinder, Disc Cutter, Bench Saw & Floor Saw  
**Segment Type:** Segmented  
**Gullet Type:** Tear Drop  
**Ventilation:** Yes



**LOW WEAR RATE**

The X90 range of products allow a broad range of cutting applications and will provide fast cutting characteristics combined with low wear rates and an excellent lifetime.



**PRODUCT DATA SHEET**

**DIAMETERS AVAILABLE:**

Code	Diameter		Segment Width (mm)	Bore Size / s (mm)
	(mm)	(in)		
GPX9011522	115	4.5	2	22.23
GPX9012522	125	5	2	22.23
GPX9018022	180	7	2.4	22.23
GPX9023022	230	9	2.4	22.23
GPX9030020	300	12	3.2	20
GPX9035020	350	14	3.2	20
GPX9035025	350	14	3.2	25.4
GPX9040020	400	16	3.4	20
GPX9040025	400	16	3.4	25.4
GPX9045025	450	18	3.6	25.4

**SUITABLE FOR USE ON:**

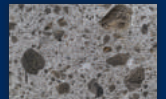


**APPLICATION:**

- Non Abrasive Indian Sandstone
- Hard Facing Brick
- Medium Facing Brick
- Hard Slate
- River Gravel Aggregate Concrete
- Flint Aggregate Concrete
- Reinforced Concrete
- Concrete Kerbs
- Concrete Slabs
- Reinforced Lintels
- Hard Limestone
- Limestone Aggregate Concrete
- Concrete Paviments
- Soft Facing Brick
- Concrete Blocks Over 15kn
- Hard Sandstone



Hard Slate



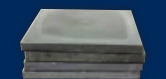
Flint Aggregate Concrete



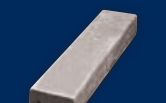
Reinforced Concrete



Concrete Kerbs



Concrete Slabs



Reinforced Lintels

● **RECOMMENDED** to cut these materials

● **Will cut these materials** with the possibility of reduced lifetime / glazing

CONFORMS TO EN13236