



GPX10 GENERAL PURPOSE

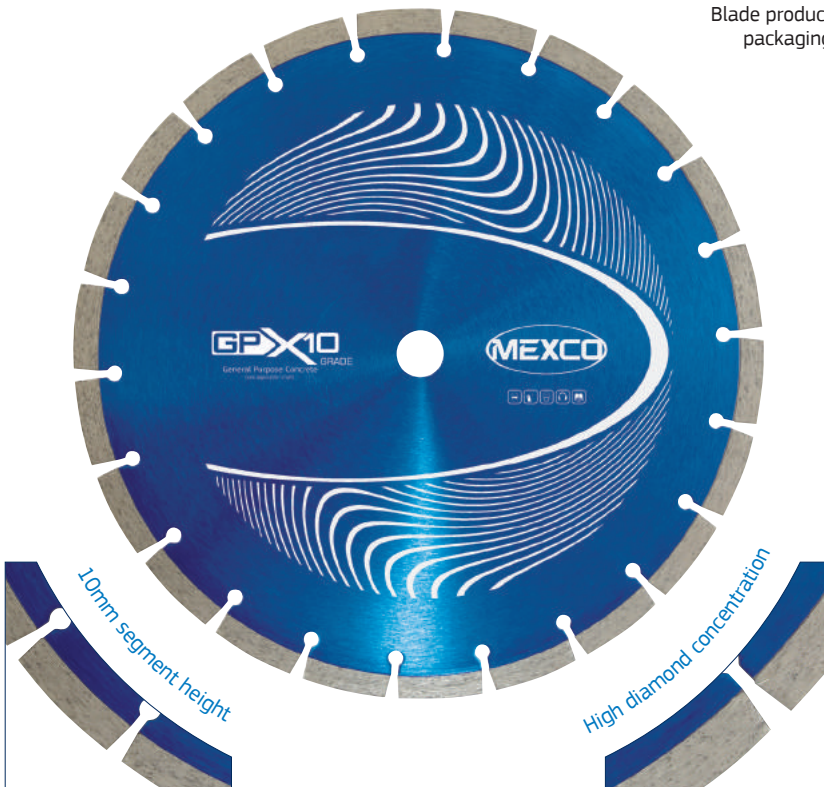
The GPX10 offers a cost effective solution for the user who requires a diamond blade that can cope with the cutting of the most widely used non-abrasive building materials.

KEY FEATURES

- 10mm Segment Height
- Heavy Duty Steel Centre
- Price Point Product
- Fast Cutting



Mexco Diamond Blade product packaging



PRODUCT DATA SHEET

DIAMETERS AVAILABLE:

| Code | Diameter | | Segment Width | Bore Size / s |
|------------|----------|------|---------------|---------------|
| | (mm) | (in) | (mm) | (mm) |
| GPX1010516 | 105 | 4 | 2 | 16 |
| GPX1011522 | 115 | 4.5 | 2 | 22.23 |
| GPX1012522 | 125 | 5 | 2.2 | 22.23 |
| GPX1018022 | 180 | 7 | 2.4 | 22.23 |
| GPX1018025 | 180 | 7 | 2.4 | 25.4 |
| GPX1023022 | 230 | 9 | 2.8 | 22.23 |
| GPX1030020 | 300 | 12 | 3.2 | 20 |
| GPX1030022 | 300 | 12 | 3.2 | 22.23 |
| GPX1035025 | 350 | 14 | 3.2 | 25.4 |

SUITABLE FOR USE ON:

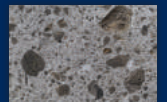


APPLICATION:

- Non Abrasive Indian Sandstone
- Hard Facing Brick
- Medium Facing Brick
- Hard Slate
- River Gravel Aggregate Concrete
- Flint Aggregate Concrete
- Reinforced Concrete
- Concrete Kerbs
- Concrete Slabs
- Reinforced Lintels
- Hard Limestone
- Limestone Aggregate Concrete
- Concrete Paviments
- Soft Facing Brick
- Concrete Blocks Over 15kn
- Hard Sandstone



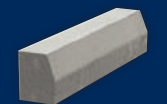
Hard Slate



Flint Aggregate Concrete



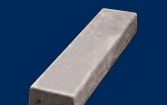
Reinforced Concrete



Concrete Kerbs



Concrete Slabs



Reinforced Lintels

- **RECOMMENDED** to cut these materials
- **Will cut these materials** with the possibility of reduced lifetime / glazing

PRODUCT OVERVIEW:

Grade: X10
Segment Height: 10mm
Segment Attachment: Sintered
Dry/Wet: Wet or Dry Use
Recommended for: Angle Grinder, Disc Cutter, Bench Saw & Floor Saw
Segment Type: Segmented
Gullet Type: Narrow Keyhole



EXCELLENT VALUE

The X10 range of products has been specifically designed to offer the user excellent performance in a wide spectrum of cutting and drilling applications whilst providing the benefit of a low purchase cost.

