



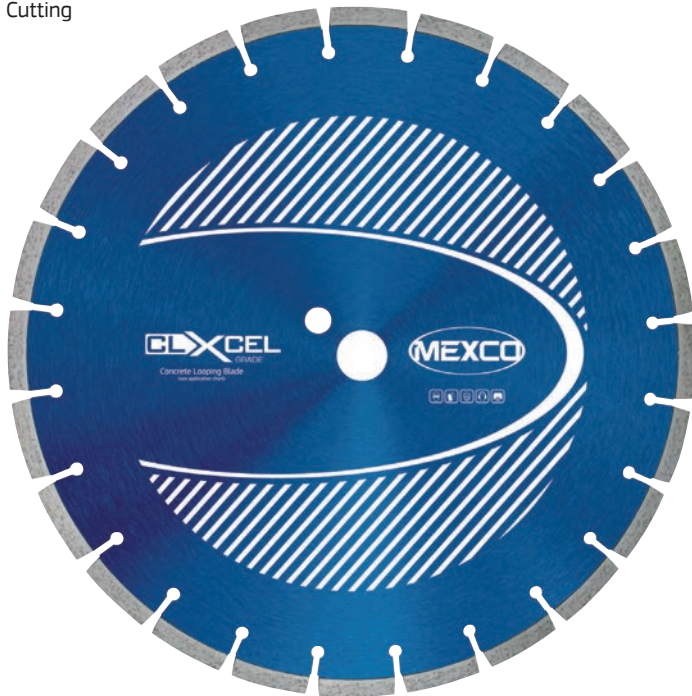
## PRODUCT DATA SHEET

### CLXCEL LOOPING BLADE

Mexco Looping blades are specifically designed to produce pre-determined width slots in concrete or asphalt to insert detector loops. For use on floorsaws only.  
*Please ensure the floor saw being used or hired has suitable power to drive these blades due to their extra segment width and weight. Please speak to one of our sales representatives for further details or email us at, sales@mexco.co.uk*

#### KEY FEATURES

- Available In 8mm, 10mm And 12mm Widths
- Heavy Duty Steel Centre
- Fast Cutting



Stock Widths Available



NB: For additional widths please contact one of our sales representatives

#### PRODUCT OVERVIEW:

**Grade:** XCEL  
**Segment Height:** 8 / 10 / 12mm      **Segment Type:** Segmented  
**Segment Attachment:** Brazed      **Gullet:** Keyhole  
**Dry/Wet:** Wet or Dry Use  
**Recommended for:** High Power Floor Saw

### XCEL GRADE | OPTIMUM COST PER CUT

The XCEL range of products are simply our best in class, due to an uncompromised use of raw materials in their manufacture they offer the user a cutting or drilling experience that is faster and cleaner with an optimum cost per cut.



### DIAMETERS AVAILABLE:

Code	Diameter		Segment Width (mm)	Bore Size / s (mm)
	(mm)	(in)		
CLXCEL3508	350	14	8	25.4
CLXCEL35010	350	14	10	25.4
CLXCEL35012	350	14	12	25.4

### SUITABLE FOR USE ON:

HIGH POWER FLOOR SAW

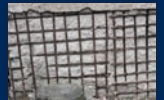


WET OR DRY USE



### APPLICATION:

- Concrete
- Reinforced Concrete



Reinforced Concrete

- **RECOMMENDED** to cut these materials
- **Will cut these materials** with the possibility of reduced lifetime / glazing

CONFORMS TO EN13236